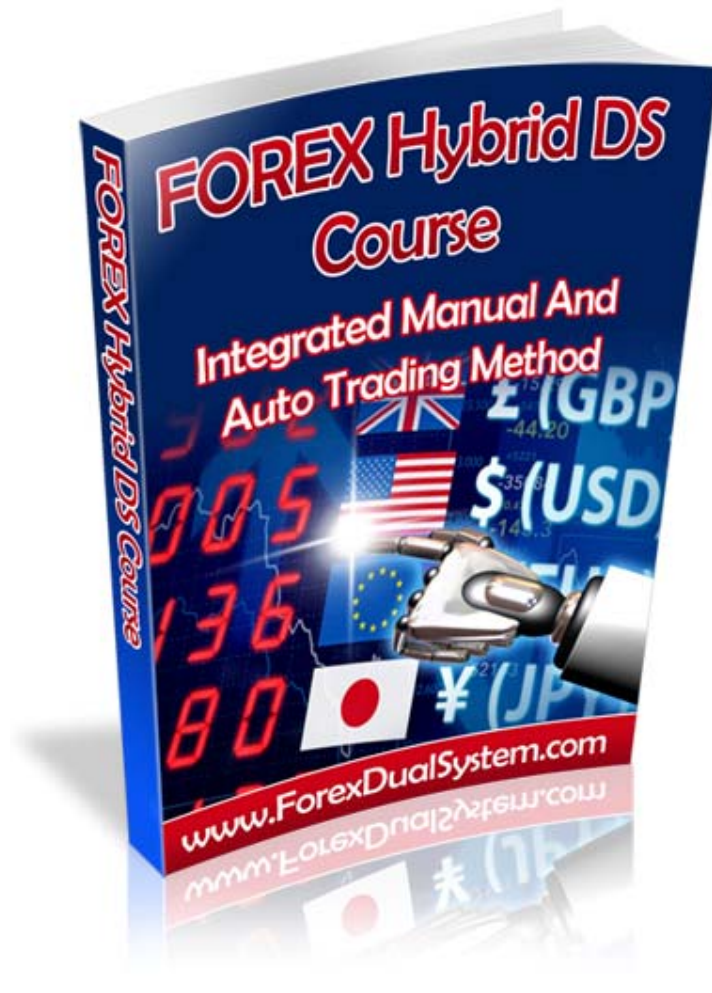


FOREX HYBRID DS Course

Modules 5 & 6

Trading with the Forex Hybrid DS Trade Manager EA



<http://www.forexdualsystem.com>
support@forexdualsystem.com

503.985.3443

GROUP THREE, LLC

723 South Casino Center Boulevard, 2nd Floor, Las Vegas, NV 89101

Dec 14, 2010

To Whom It May Concern:

LIMITED LICENSE TO COPY

Group Three, LLC grants the bearer of this document ("user") limited, non-exclusive license to make one physical (printed) copy of its user's manual, **Forex Hybrid DS for the MetaTrader4 Quick-Start Guide**, contained herein, and downloaded from its Website www.forexdualsystem.com, including graphs, charts, and other illustrations, for the user's personal use. No other rights or ownership are granted herein, and user, by making the single copy granted herein, acknowledges that he/she may not reproduce or distribute the above-referenced document in any manner or by any means. Group Three certifies that no other individual or parties hold copyright interest in the work described above, that it holds all rights to **Forex Hybrid DS for the MetaTrader4 Quick-Start Guide**, and that it is authorized to grant this license.

Group Three, LLC
support@forexdualsystem.com
503.985.3443

Notice to copy centers: Should you have any questions, please contact us at the phone number or email address above.

Risk Warning

TRADING FOREIGN CURRENCIES IS A CHALLENGING AND POTENTIALLY PROFITABLE OPPORTUNITY FOR EDUCATED AND EXPERIENCED INVESTORS. HOWEVER, BEFORE DECIDING TO PARTICIPATE IN THE FOREX MARKET, YOU SHOULD CAREFULLY CONSIDER YOUR INVESTMENT OBJECTIVES, LEVEL OF EXPERIENCE AND RISK APPETITE. MOST IMPORTANTLY, DO NOT INVEST MONEY YOU CANNOT AFFORD TO LOSE.

THERE IS CONSIDERABLE EXPOSURE TO RISK IN ANY FOREIGN EXCHANGE TRANSACTION. ANY TRANSACTION INVOLVING CURRENCIES INVOLVES RISKS INCLUDING, BUT NOT LIMITED TO, THE POTENTIAL FOR CHANGING POLITICAL AND/OR ECONOMIC CONDITIONS THAT MAY SUBSTANTIALLY AFFECT THE PRICE OR LIQUIDITY OF A CURRENCY.

FOR EXAMPLE, TRADING THE VOLATILITY CREATED DURING THE RELEASE OF HIGH-AND MEDIUM-IMPACT ECONOMIC REPORTS PRESENTS EXCEPTIONAL OPPORTUNITIES FOR PROFITS. LIKewise, TRADING IN TIMES OF HIGH VOLATILITY ALSO INCREASES YOUR POTENTIAL RISK. TO ILLUSTRATE, THERE MAY BE TIMES WHEN YOU WILL EXPERIENCE SLIPPAGE IN THE FORM OF A GAP BETWEEN THE PREVIOUS BID AND THE CURRENT BID. THIS IS ESPECIALLY TRUE WHEN THE MARKET IS MOVING FAST DUE TO HIGH VOLATILITY. THUS, YOUR ORDER MAY BE FILLED AT AN AMOUNT FAR PAST YOUR REQUESTED ORDER RATE. IN AN EXTREMELY FAST-MOVING MARKET, YOU MAY ALSO EXPERIENCE A DELAY OF 10 TO 15 SECONDS BEFORE YOUR ORDER IS FILLED. IT IS POSSIBLE THAT YOU COULD LOSE MOST OR ALL OF THE FUNDS IN YOUR TRADING ACCOUNT. THEREFORE, DO NOT TRADE WITH MONEY YOU CANNOT AFFORD TO LOSE.

MOREOVER, THE LEVERAGED NATURE OF FX TRADING MEANS THAT ANY MARKET MOVEMENT WILL HAVE AN EQUALLY PROPORTIONAL EFFECT ON YOUR DEPOSITED FUNDS. THIS MAY WORK AGAINST YOU AS WELL AS FOR YOU. THE POSSIBILITY EXISTS THAT YOU COULD SUSTAIN A TOTAL LOSS OF INITIAL MARGIN FUNDS AND BE REQUIRED TO DEPOSIT ADDITIONAL FUNDS TO MAINTAIN YOUR POSITION. IF YOU FAIL TO MEET ANY MARGIN CALL WITHIN THE TIME PRESCRIBED, YOUR POSITION WILL BE LIQUIDATED AND YOU WILL BE RESPONSIBLE FOR ANY RESULTING LOSSES. INVESTORS MAY LOWER THEIR EXPOSURE TO RISK BY EMPLOYING RISK-REDUCING STRATEGIES SUCH AS 'STOP-LOSS' OR 'LIMIT' ORDERS.

AUTOTRADER DISCLAIMER

WHILE EVERY EFFORT HAS BEEN MADE TO ASSURE THAT THE FOREX HYBRID DS EXPERT ADVISOR WILL PERFORM AS INTENDED, THE USER ASSUMES ALL RISK FOR ITS USE. BY DOWNLOADING THIS USER'S GUIDE AND/OR THE FOREX HYBRID DS SOFTWARE, YOU ACKNOWLEDGE THAT IT IS A PROGRAM AND THAT IT EXECUTES TRADING ORDERS ACCORDING TO SIGNALS THAT ARE GENERATED FROM THE DATA PROVIDED VIA YOUR BROKER'S PLATFORM. ACTUAL CONDITIONS WHILE TRADING A "LIVE" ACCOUNT WITH REAL MONEY CAN BE VERY DIFFERENT FROM THOSE EXPERIENCED IN A DEMO ACCOUNT. FOR EXAMPLE, IN A LIVE ACCOUNT, THERE MAY BE TIMES WHEN YOU WILL EXPERIENCE SLIPPAGE IN THE FORM OF A GAP BETWEEN THE PREVIOUS BID AND THE CURRENT BID THAT MAY NOT BE ACCURATELY REFLECTED IN A DEMO ACCOUNT OR IN HYPOTHETICAL RESULTS. THIS IS ESPECIALLY TRUE WHEN THE MARKET IS MOVING FAST DUE TO HIGH VOLATILITY. THUS, YOUR ORDER MAY BE FILLED AT AN AMOUNT FAR PAST YOUR REQUESTED ORDER RATE. IN AN EXTREMELY FAST-MOVING MARKET, YOU MAY ALSO EXPERIENCE A DELAY OF 10 TO 15 SECONDS BEFORE YOUR ORDER IS FILLED. FURTHERMORE, POWER OUTAGES, LOSS OF DATA FEED, OR UNCONTROLLED INTERNET CONDITIONS COULD CAUSE TERMINATION OF EXPERT ADVISOR FUNCTIONS. BY DOWNLOADING THE SOFTWARE, YOU AGREE THAT GROUP THREE IS NOT RESPONSIBLE FOR ANY CONSEQUENCES, FINANCIAL OR OTHERWISE, THAT MAY RESULT FROM YOUR USE OF THE FOREX HYBRID DS SOFTWARE. IT IS STRONGLY RECOMMENDED THAT YOU SUPERVISE THE EXPERT ADVISOR ON A REGULAR BASIS.

Module 5: Trading with the Forex Hybrid DS Trade Manager EA

The Trade Manager EA will be available for purchase soon. More details to follow in the coming days. Modules 5 and 6 show you how it works.

This module of the quick-start guide introduces you to the Forex Hybrid DS Trade Manager EA. Remember, every trade is a collaboration between you and your Trade Manager. Both you and the Trade Manager have tasks to perform, so we will review them briefly.

Discretionary Tasks Only You Can Do:

- Choose the appropriate support and resistance levels based on visual analysis
- Determine your initial stop loss and profit target pips
- Decide on your trade's position size
- Select your entry method:
 - Monitor the charts and enter the trade manually
 - Wait for the alert provided by the EA
 - Allow the EA to enter for you

Mechanical Tasks Performed by the EA:

- Monitors markets according to your parameters
- Alerts you to trade opportunities that fit within the parameters you set
- Provides the means for manual entry at any time
- Performs all math for determining breakouts and reversals, if in auto-entry mode
- Enters trades automatically, if in auto-entry mode
- Calculates correct position size for your risk, if directed
- Submits initial stop loss and profit target orders according to your input, if in auto-entry mode
- Automatically moves trailing stop loss according to your preferences
- If the scale-out option is selected, performs necessary calculations, places orders, and liquidates 50% of your position
- Proprietary algorithm accelerates trailing stop loss to lock in profit at specific points
- Exits trades according to your parameters

As you can see, the EA automatically performs all trade management functions including trailing the stop loss, scaling out of a position, conserving profit, employing exit strategies, and, with your discretion, money and risk management.

Of course, you always have the option of monitoring the trades and changing the stop loss and/or profit target, or even exiting manually as see fit.

In a real sense, you and the EA are partners in the trading process: you, with your visual analysis abilities, trading style and preferences, and the EA, with its automated and unemotional trade management capabilities.

IMPORTANT:

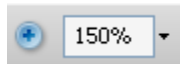
The Forex Hybrid DS Expert Advisor, while automated, is not an automatic trading robot. The automation is limited to trade management functions for the current trade, and for as long as price is between support and resistance. If price closes beyond support or resistance with no resulting trade, you will be alerted to reset your support and resistance parameters at the open of the bar following the breach.

If a trade, such as a reversal, starts and finishes between support and resistance, the EA will continue to look for trades that fit your parameters.

For the most part, however, the EA is automated for one trade at a time.

The Forex Hybrid DS Trade Manager EA

First, we'll take a look at the EA properties box and get you acquainted with the parameter settings found there. Although it looks like a lot, it's really pretty simple. We'll get into more details as we move through the manual.



*** For best viewing of the illustration below, you may wish to increase the page magnification to 150%**

Variable	Value
ab _TITLE_	FX_Hybrid_DS_0.26a
Account	0
Lots	0.1
MarketOrderPlatform	true
SaveScreenShot	false
ab _AlertOnly_	*** Auto-Trade OR Alert Only ***
AutoTrade	true
AutoMoneyManage	true
PercentOfBalanceRisk	1.0
Slippage	3
MaxStopLoss	60
TakeProfitBO	200
TakeProfitRev	100
ab _UserSR_	*** Key in Support and Resistance prices ***
SupLevel	0.0
ResLevel	0.0
ab _BOut_Rev_	*** 0 <=> Break Out; 1 <=> Reversal; 2 <=> ...
BreakOutSwitch	2
ab _Trailing_	*** 0 <=> No Trail; 1 <=> Trail, No Split; 2<=...
TrailSwitch	2
ab _Trailing_Speed_	*** 0 <=> Slow; 1 <=> Medium; 2<=> Fast ***
TrailSpeed	0
TimeFrameMinutes	60
ab _StartAndEndTimes_	***** Use Broker or VPS Time: *****
StartEntryTime	00:00:00
EndEntryTime	23:59:59
OPEN_BUY_NOW	false
OPEN_SELL_NOW	false

Enter your account number here.

If you are manually determining your position size, enter it here and set "AutoMoneyManage" to false.

Set AutoTrade to true if you want the EA to enter the trade automatically. Set it to false if you want an alert when a trade opportunity occurs.

Set "AutoMoneyManage" to true if you want the EA to calculate the correct position size based on the percentage of your account balance you are willing to risk. 1% is the default.

Enter the maximum slippage you are willing to accept.

Enter your stop loss value.

Enter your profit target for a breakout.

Enter your profit target for a reversal.

Enter your support and resistance prices.

Set "BreakOutSwitch" to "0" if you want to trade breakouts only, to "1" if you want to trade reversals only, or to "2" if you want to trade both.

Set "TrailSwitch" to "0" if you don't want a trailing stop loss, to "1" if you want a trailing stop loss but don't want to scale out of your trade, or to "2" if you want a trailing stop loss AND you want to scale out of your trade.

Set "TrailSpeed" to "0" for a slow-moving stop loss, to "1" for a moderately fast trailing stop, or to "2" for a fast-moving stop loss.

Enter the time frame you are trading in minutes. 1-hr = 60, 4-hr = 240, Daily = 1440, and so on.

Set the "StartEntryTime" to the hour you want to begin the EA to actively seek trading breakouts and reversals.

Set the "EndEntryTime" to the hour you want to stop seeking trade opportunities. Leave the settings at 00:00:00 to 23:59:59 to trade all 24 hours.

Set "OpenBuyNow" to true to manually enter a long trade. Set "OpenSellNow" to true to manually enter a short trade.

CAUTION: Leaving either of these settings at true will cause the EA to continue to enter trades as soon as one closes. The EA will follow those instructions until your account is drained. As soon as your trade is opened, reset the value to false.

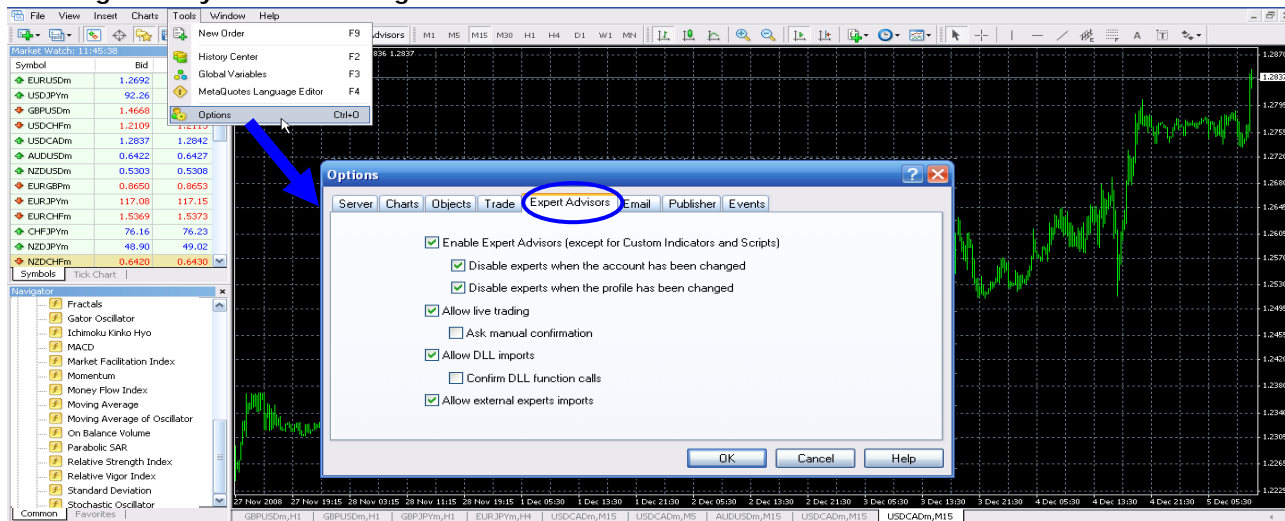
Enable Security and Live Trading

When you first open up your MT4 platform, or when you add a new chart, the charts will look something like the one below. It doesn't matter whether your account is live or demo, the Forex Hybrid DS and its two signal indicators will not operate until you enable live trading and allow DLL imports.

To do so, click on the Tools menu and select Options. After the Options dialog box opens, select the Expert Advisors tab. Check the three boxes associated with Enable Expert Advisors, Allow Live Trading, Allow DLL Imports, and Allow External Experts Imports. If you check "Ask Manual Confirmation," trading will be interrupted until you manually confirm you want to take a trade. This is not recommended. The Forex Hybrid DS allows you to do this from within the EA, thus avoiding several inconvenient steps.

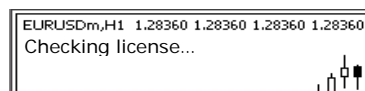
If you check "Confirm DLL Function Calls," a confirmation box will pop up every time the Forex Hybrid DS accesses the DLL. We also do not recommend this as it is not only irritating, but also it can interrupt the EA's work until you confirm. It's best not to check those two boxes. When finished, click OK.

Enabling security and live trading



License Check

Whenever you attach the Forex Hybrid DS EA to a chart, you will see the following message in the upper left hand corner of the chart:



If this is your first use, a licensing pop-up box will appear, asking for the user name and password you received from Group Three. Enter the required information; click on OK, and after two or three ticks (one to send information to our server, one to receive the information, and one to start the indicator), the EA will begin the license check. When the check is complete, the EA will remove the message.

However, since the MT4 performs operations only as ticks come in, it may take a while to complete a license check during slow periods.

IMPORTANT: During the weekends—from Friday at approximately 17:00 EST to Sunday at 17:00 EST, depending on the broker—when no ticks are available, "checking license..." will not change. In that case, there is nothing wrong with the program; it's just waiting for a tick.

After the license check is complete, check for two things: 1) the upper left corner of the chart should display information pertinent to the Forex Hybrid EA's status, and 2) the upper right corner should display the Forex Hybrid DS version and a Smiley Face.

Once the EA has finished the license check, you can continue with your preparation for trading.

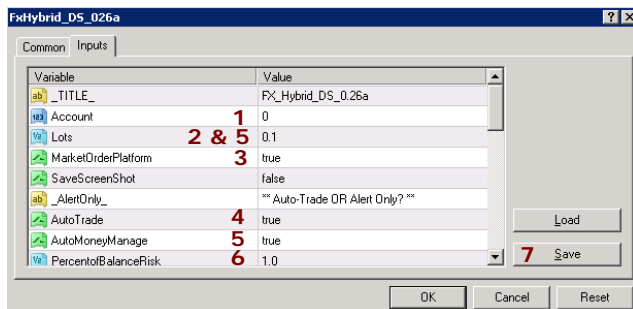
EURUSDm,H1 1.28260 1.28260 1.28260 1.28260	Currency pair and OHLC data
Version FX_Hybrid_DS_0.26a	Forex Hybrid DS version
Spread 1.8 Support: 1.3154 Resistance: 1.3214	Spread = the current spread. Support and Resistance should be identical to the values you entered
Init SL 53 Profit Target 300 / 88 Active? 0	Initial Stop Loss in pips. Profit Target for Breakouts/Reversals. Active? 1 means the Trade Manager EA is actively seeking trading opportunities. Active? 0 means that the EA is not seeking trading opportunities. If you have trading hours set to other than 00:00:00 to 23:59:59, you will see Active? 0 during the off hours.
Approx. Num. Lots: L = 0.96 S = 0.96	Approximate number of lots per position is based on current price data. The actual position size is determined at entry.

FxHybrid_DS_026a ☺	A Smiley Face indicates that the Forex Hybrid DS program itself has no operating problems. However, you <i>can</i> have a Smiley Face and still not have entered the correct trading parameters. Ignoring an alert, or failing to take corrective action will cause the EA to take no action, such as entering a trade, adjusting stop loss values, or exiting at a profit target.
--------------------	--

Your Discretionary Tasks

Enter Basic Parameters into Your Trade Manager EA

Let's begin with the mundane tasks, as there are some settings that you won't change often after you have entered them. Open your FxHybrid_DS_xxx EA and do the following:



1. Enter your account number. The EA will not function if you don't.
2. If you have your own money management and position sizing strategies, use this line for entering the number of lots you want to trade. Make sure to change "AutoMoneyManage" to false.
3. Leave the "MarketOrderPlatform" value set to true.
4. If you want the EA to automatically enter trades after you have input the appropriate data, set "AutoTrade" to true. If you want to enter your trades manually and then have the EA take over, set "AutoTrade" to false. You will receive an alert any time a trade meeting your parameters presents itself.
5. If you do not have your own money management and position sizing strategies, set "AutoMoneyManage" to true. The EA will automatically calculate your position size based on the percentage of your account balance you feel comfortable risking.

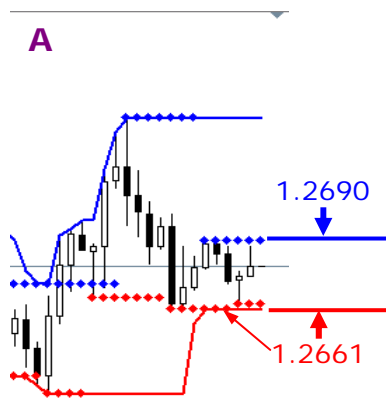
For example, if your account balance is \$5,000 and you want to risk 2%, you would enter that value. The EA then takes your account balance, the percent you want to risk, your stop loss pips value, and the value of a pip in the currency pair you're trading and calculate your position size.

Thus, if you were trading EURUSD with a 2% risk on a \$5,000 mini account with a 53-pip stop loss, your position size would be about 1.82 mini lots.

6. Enter the percentage of your account balance you want to risk.
7. Press Save, give it a name, and when you're finished, click on OK. The information you entered is now saved in the "presets" file. You can access it for loading onto a chart by pressing "load." This saves time when you need to setup your EA.

Identify Support and Resistance

Your first task is to identify the appropriate support and resistance levels based on visual analysis. You can use any or all of the Forex Mass Mind Entry Indicator's, or any other means at your disposal. In this example, we're combining the Donchian channel with Fractal Support and Resistance. Again, we're looking for areas close to the "hard right edge" of the chart that have been tested more than once—areas which price has respected and refused to move beyond.



In Chart A, we found the 1.2690 level, highlighted by the Fractal Resistance Indicator (blue diamonds), to have been tested several times. So we'll use that level for resistance. We also see that both indicators have identified the 1.2661 level as an area of support. We'll make note of the values for later input into the Trade Manager EA.

Support	Resistance
1.2661	1.2690

Determine Your Initial Stop Loss

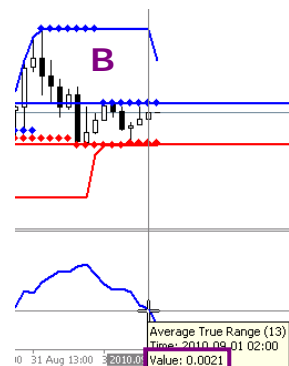
If we are planning on having the Trade Manager EA automatically enter our trade, we won't know in which direction a breakout or reversal will take. So we have to plan for both long and short positions. In doing so, we free ourselves of the need to be right. Instead, we put ourselves in a position to want what the market wants.

Use the following table as a guide for setting your initial stop loss and profit targets. The values are based on extensive backtesting, and the ranges reflect the minimums and maximums that produced the most profitable results. In the end, whichever value you determine will be used for both long and short positions in anticipation of the trade.

Consequently, since 40 to 70 pips is a good range for the initial stop loss on the 1-hour charts, we could use either 40 pips or 70 pips as our stop loss. Or, we could take something in the middle, like 55 pips.

Rather than guess or rely on gut feeling, we can use a multiple of the ATR and determine whether the resulting stop loss value is outside of the minimums or maximums in the table. If you are an aggressive trader, you could use a value that is at the lower end of the range in the table. On the other hand, if you are a conservative trader, you might consider using values at the higher end of the table's range. If you prefer a moderate approach to trading, use a value that fits into the middle of the scale.

Time Frame	Min Pips Stop Loss	Max Pips Stop Loss	Min Pips Profit Tgt	Max Pips Profit Tgt
15	30	50	60 - 100	350
30	30	60	60 - 120	500
60	40	70	80 - 140	650
240	40	80	80 - 160	750
1440	40	120	80 - 240	1000



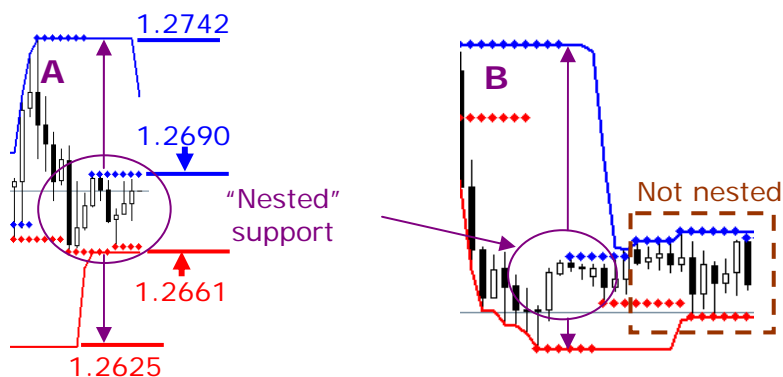
Support	Resistance	Stop Loss	BrkOut TP Long	BrkOut TP Short
1.2661	1.2690	53	138	80

Determine Your Profit Targets for Reversals

Profit targets for reversals are tied to the support and resistance levels that price bounces between. Since we don't expect reversals to break out of those boundaries, it's quick and easy to calculate the target. Here's how:

If your current support and resistance levels are "nested"—that is, they are located within a range of higher resistance and lower support levels—use the higher and lower values for determining your profit targets. Chart A below is an example of nested support and resistance. Chart B illustrates both nested support and resistance as well as an area where support and resistance are not nested.

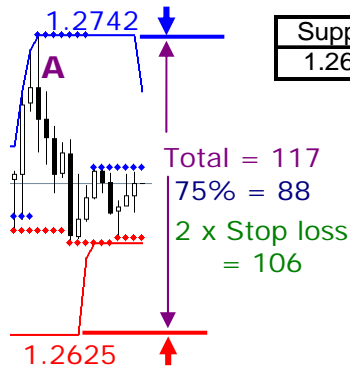
If the range of your current support and resistance is less than twice your stop loss value, set the Trade Manager to trade only on a breakout. In such confined space there is little room for a reversal to develop into a profitable trade. It is much more likely that a breakout of a narrow support/resistance range will occur. This can be true even with nested support/resistance, but at least there is a healthy chance for a successful trade off a reversal.



Whenever possible, we want our profit target to be at least twice the value of our stop loss. We calculated our stop loss to be 53 pips, so twice that would be 106 pips. That value is our minimum profit target.

Since our support and resistance are nested (Chart A), we'll use the higher resistance and lower support to determine the maximum profit target values. Working on the premise that reversals often tend to run between support and resistance, we'll calculate a target that is 75% of the distance between the two. Then we'll add the results to the resistance line for long trades and subtract the same value from the support line for short trades.

In Chart A below, Resistance is 1.2742 and Support is 1.2625, so the distance between them is 117 pips. 75% of 117 pips yields 88 pips. Since twice our stop loss value is greater, we'll use 106 pips as our reversal profit target and make note of the value.



Support	Resistance	Stop Loss	BrkOut TP Long	BrkOut TP Short	Rev TP
1.2661	1.2690	53	138	80	106

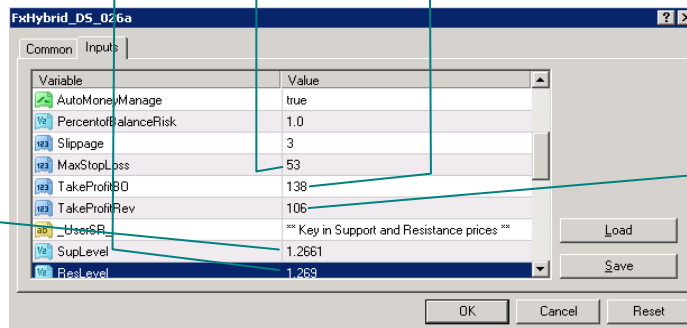
That's it the math we need to do. We will now key these values into the Trade Manager EA and set it up for trading.

Enter Your Parameters

Open the Forex Hybrid DS properties box and enter the support, resistance, stop loss, and profit target values in their corresponding cells. Since we can enter only one profit target for breakouts, we'll use the higher of the two.

Later on, after entry, you will know for sure whether you are long or short, and you can make any adjustments at that time.

Support	Resistance	Stop Loss	BrkOut TP Long	BrkOut TP Short	Rev TP
1.2661	1.2690	53	138	80	106

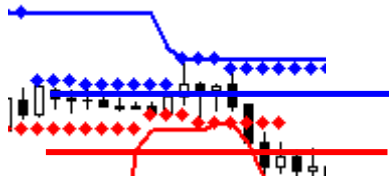


Choose Your Trade Type

The Forex Hybrid DS has a "Breakout Switch" that gives you three options for the type of trade you want to enter: Breakout Only, Reversal Only, or both Breakout and Reversal.

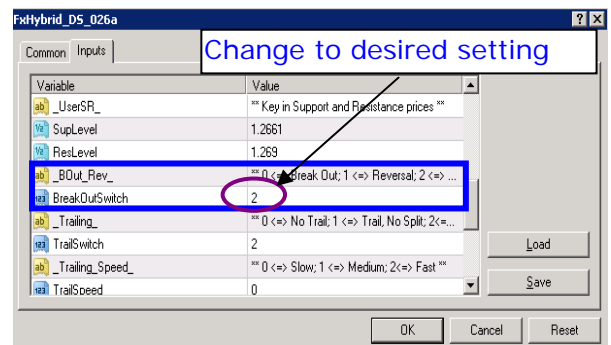
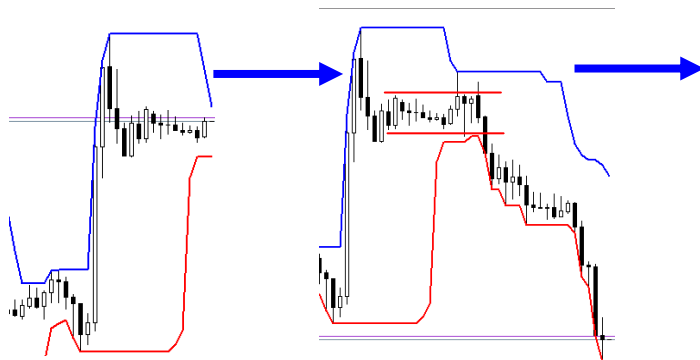
- Select option "0" for Breakout Only

If the range between support and resistance were less than twice your stop loss value, you would not want to trade reversals. It is difficult to profit from such trades because of the confined area, such as shown in the example below. Breakouts are much more likely under these conditions. When that is the case, select "0."



- Select option "1" for Reversal only, or "2" for both Breakout and Reversal

If the range between support and resistance is quite large (four to five times your stop loss value) and price has reached a new high as in the illustration below, there may be a reversal to the downside, and you could go with option "1." However, while the market did reverse itself, it is possible that there was no valid reversal bar. It is more likely that a breakout below support would occur, given the nested support and resistance. Thus, it is usually better to go with option "2."



Choose Your Trailing Stop Loss Type

The Forex Hybrid DS comes with a "Trail Switch" that offers you three options for the type of trailing stop loss:

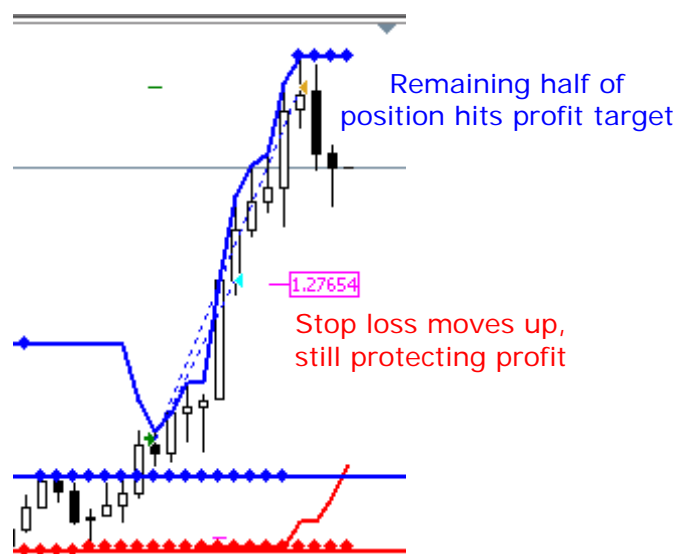
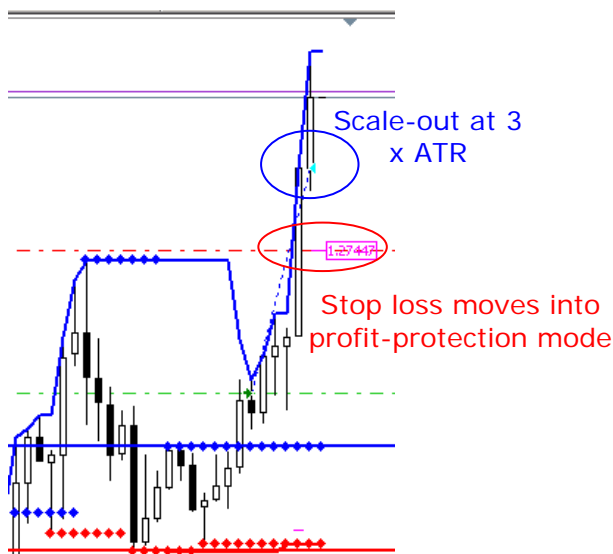
0. No trailing stop loss (trade goes until either the profit target or the stop loss is hit)
1. Trailing stop loss with no scale-out (no liquidation of part of your position)
2. Trailing stop loss with scale-out (liquidation of part of your position)

- Select option "0" for no trailing stop loss

If you want the Trade Manager to handle all aspects of the trade except your stop loss, then enter "0." The stop loss will remain in its initial position until your profit target is reached or your stop loss is hit.

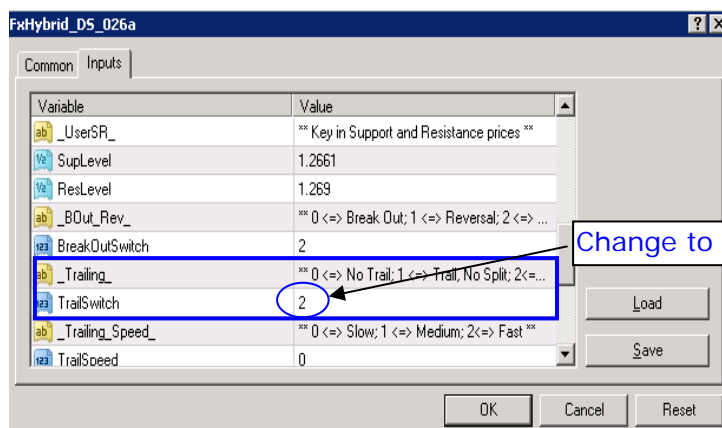
- Select option "2" for a trailing stop loss with scale-out

The Forex Hybrid DS has the ability to scale out of your position when profit reaches 3 times the ATR. At that point, the Trade Manager will liquidate one-half of your position and simultaneously move the stop loss to a profit-protecting level. Now you have already banked some profit. The rest of your position will trade as normal. The illustrations below show you what this feature does.



- Select option "1" for a trailing stop loss without scale-out

If you do not wish the scale-out feature to operate as explained above, key in option "1."



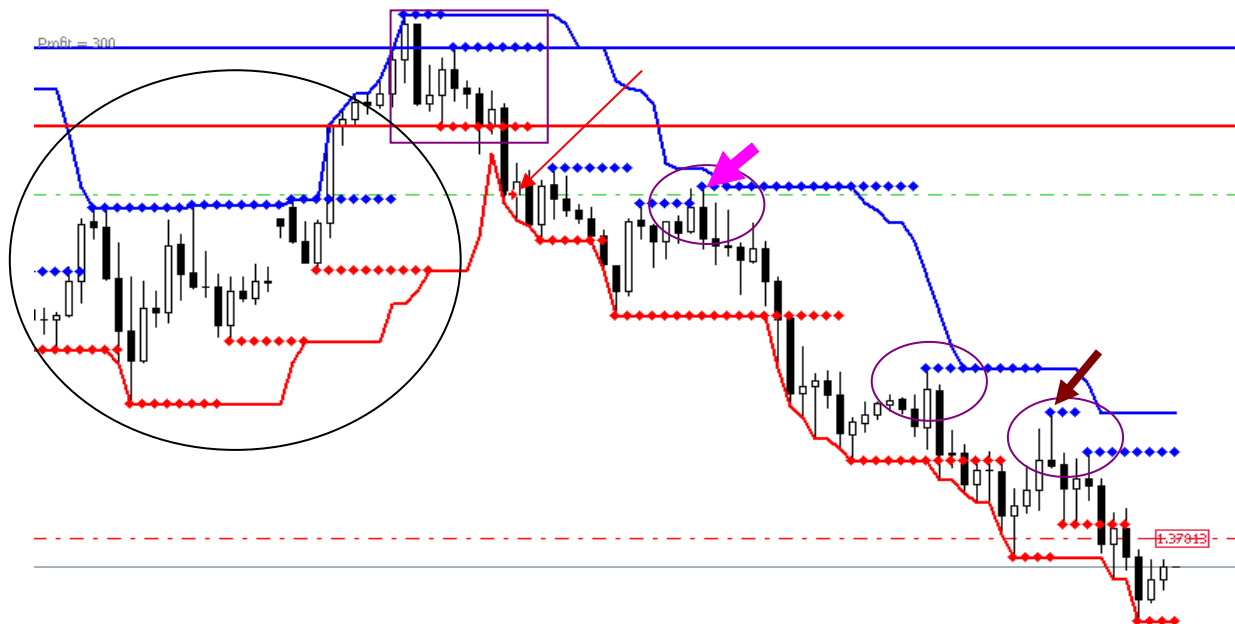
Set Your Trailing Stop's Speed

The Forex Hybrid DS gives you the flexibility to control the speed of your trailing stop loss on a trade-by-trade basis. Once you've set it for a particular trade, you cannot change the speed until the trade is closed. However, you can manually re-adjust the stop loss if you desire. The speed settings are:

0. Slow
1. Medium
2. Fast

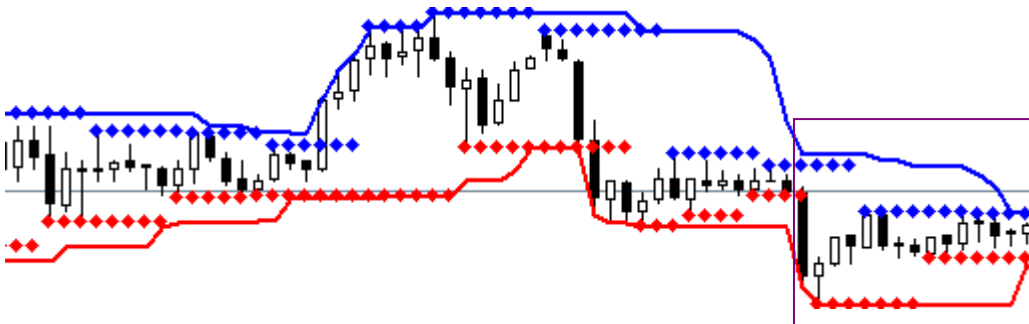
- Select "0"

If the market leading up to your current area is presenting irregular bars—some extra long, some short, and some in between— a slow trailing stop may be in order. The irregular area is circled in black and your starting position is within the square. The red arrow is pointing to your entry, which is marked by the dotted green line. The purple circles represent the consolidation and pullback areas missed by the trailing stop loss. The stop loss itself is currently at the bottom of the chart, marked by the dotted red line and the flag. The dark red arrow shows the point at which the medium-speed trailing stop exited the trade. The large pink arrow indicates where the fast-speed stop loss crashed and burned.

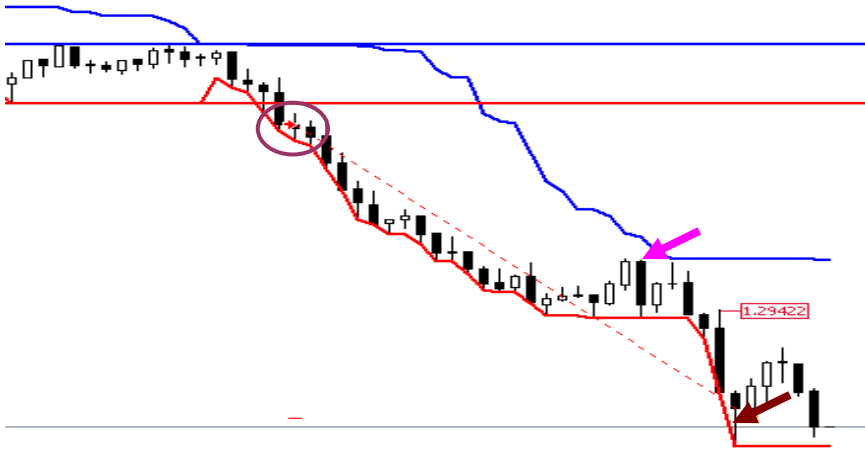


- Select "1" or "2"

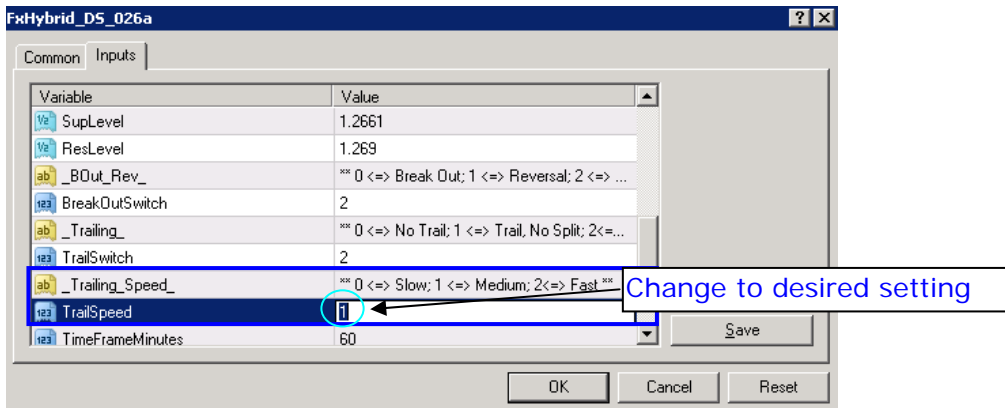
If the market leading up to your current area is presenting bars of more or less the same range—not as extreme as those in the illustration above— then you can select speed 1 or 2. The chart area preceding the rectangle illustrates this point.



The chart segment below is a continuation of the one above. The trade's entry is found within the purple circle. The hot pink arrow is the point at which the fast-moving trailer exited the trade. The dark red arrow points to where the medium-speed trailer kept the trade intact until it hit the profit target.



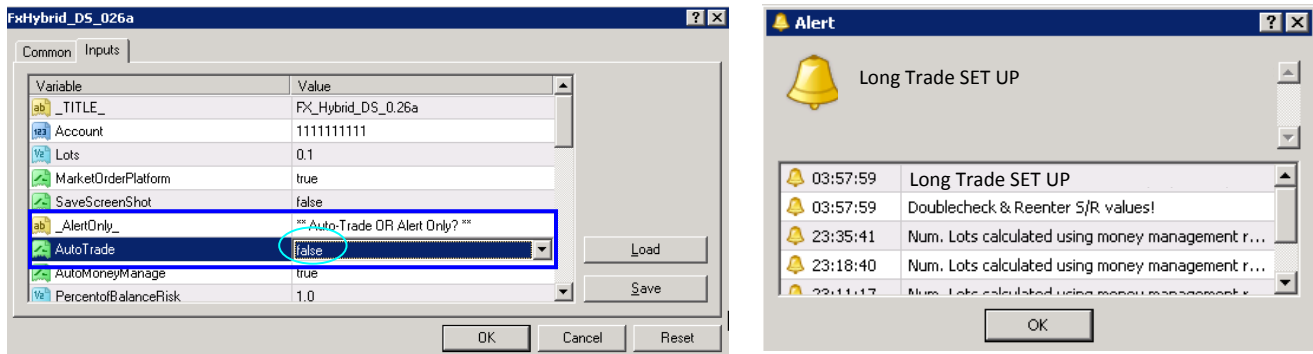
The comments on trailing stop speed are only guidelines. You have the freedom to develop your own rules for using them.



Select Your Entry Method

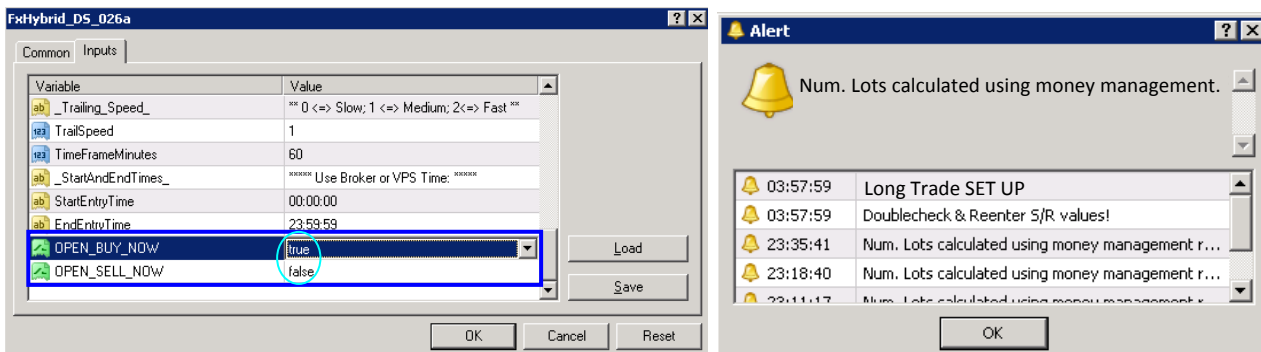
With the Forex Hybrid DS, you have the option to enter manually after an alert, or to have the Trade Manager enter the trade automatically. To exercise the manual option, the Forex Hybrid DS EA must be attached to the chart you are trading. Open the properties box and set "AutoTrade" to false.

Once you have typed in your trading parameters and activated the EA, you will receive a visual alert accompanied by an alert tone informing you of a trade setup.

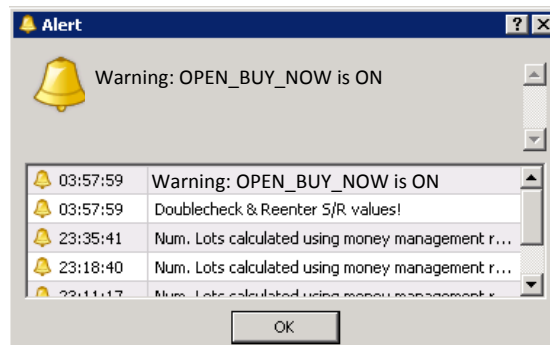


After you check the possible trade out and decide that you want in, you'll need to enter the trade manually. This procedure can be followed at any time, with or without an alert. Simply open the EA properties box and scroll all the way to the bottom.

To manually enter a long trade, set "OPEN_BUY_NOW" to true. For short trades, set "OPEN_SELL_NOW" to true. Click OK. The money management alert will pop up. Click OK.



It will take one tick to enter your order, one tick for the order to execute, and one tick to generate the following alert:



DO NOT IGNORE THIS WARNING! As soon as it pops up, open your EA properties box, reset "OPEN_BUY_NOW" to false, and click OK. If you do not follow this procedure, the EA will continue to open buy orders as soon as the last one closes. It will do this until your account is depleted.

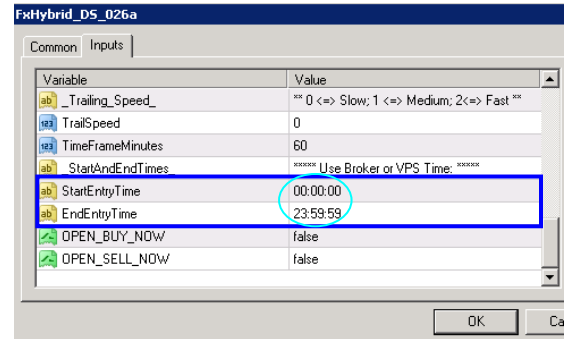
Remember, you can open a trade manually at any time. Just remember to reset the "OPEN_BUY_NOW" to false.

Set Trading Hours According to Your Preference

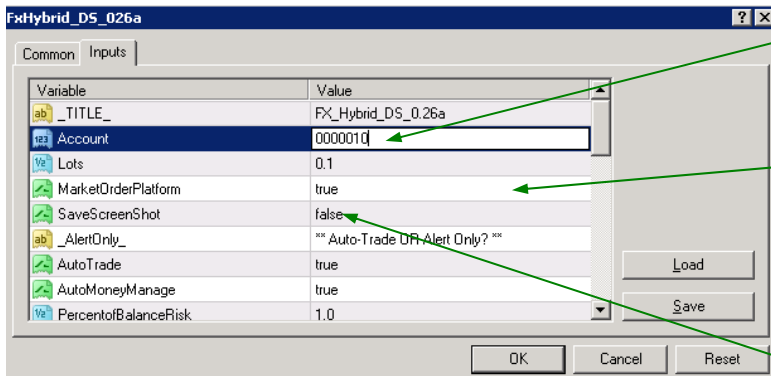
The Forex Hybrid DS can be set to trade any hours you wish. The default is set for 24-hour trading, but if you have a preference for certain Forex sessions, and want the Trade Manager to pay attention to possible trades only during those times, you can dial in those hours. If a trade is open, the Trade Manager will, of course, supervise the trade until it is closed out regardless of the times you have entered.

Below is a schedule of the various sessions in GMT.

- 00:00 to 23:59 (24-hour trading)
- 07:00 to 15:59 GMT (London session)
- 13:00 to 21:59 GMT (New York session)
- 22:00 to 06:59 GMT (Australia/Asian session)
- Other hours of your choice



Final But Important Steps



You must enter your account number, or the EA will not take trades

If your broker's MT4 platform accepts only Market Orders, as most in the USA do, keep MarketOrderPlatform set to "true." See the info below for more details.

If you want to save a screen shot of your trades, set SaveScreenShot to "true." Otherwise, leave it set to "false." FX Hybrid DS will save your shots by date in C:\Program Files\MT4\Experts\Files. You will need to regularly purge the folder to keep it from becoming too large.

With a Market Order MT4 platform, the EA must first place the buy or sell order, and after it is filled, place the stop loss and profit target orders. If your broker's platform is a Market Order platform and you do not set "MarketOrderPlatform" to true, your buy and sell orders will not be accepted. However, if your broker's platform is not a Market Order platform, it doesn't matter whether the "MarketOrderPlatform" value is set to true or false. Your order will be executed regardless.

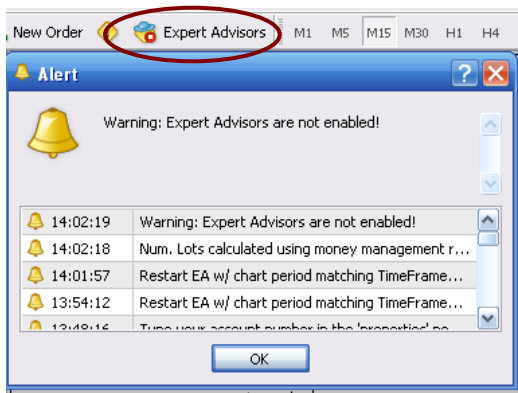
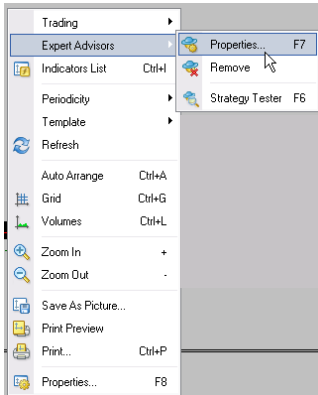
Now that you are finished with all of the setup work, your EA should be up and running and your chart, particularly the upper left and upper right corners, should resemble the one below:

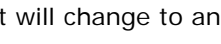


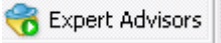
Before you start trading, please go through the important information on alerts and warnings in Module 6 below.

Module 6: Alerts

If any of the alerts below appear, right click on the chart, select Expert Advisors, and then select Properties, and the Forex Hybrid DS properties box will open. Take the appropriate corrective action, click OK, and your chart should resemble the one above. Clear the alert by clicking OK.

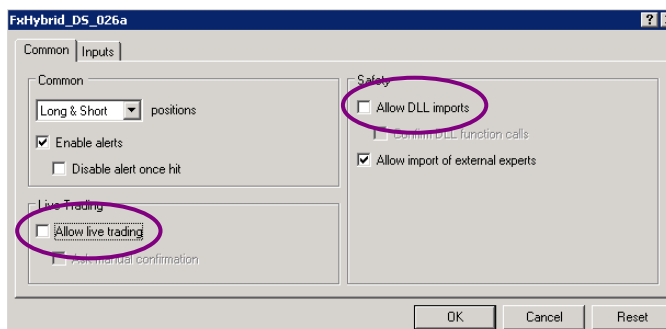


You inadvertently disabled your expert advisors. The icon has a red "nose." Also, the Smiley Face in the upper right corner of the chart will change to an "x."  FxHybrid_DS_026a x |

Click on the icon; it will change to green and the Smiley Face will return.  FxHybrid_DS_026a ☺ |

Then click OK to clear the Alert.

Either of these two alerts below means you didn't follow Step 1. Open the FX Hybrid DS properties box Common tab and check "Allow live trading" and "Allow DLL imports." Click OK, clear the alert, and then go back to Step 1 and follow the instructions there. Also, if "Allow live trading" is disabled, you'll get a Frowny Face in the upper right corner of the  FxHybrid_DS_026a ☹ Not so with "Allow DLL imports." You just get the alert.



This completes the setup, including correcting alerts you may encounter. You are now almost ready to get started with your trading. But before you trade, you need to carefully absorb and consider the final module, Module 7: Position Sizing and Money Management. It's the most important part of the system, so please stay tuned for it.